

RGE-GS 开槽型 (DK)

RGE-GS Slotting Type (DK)

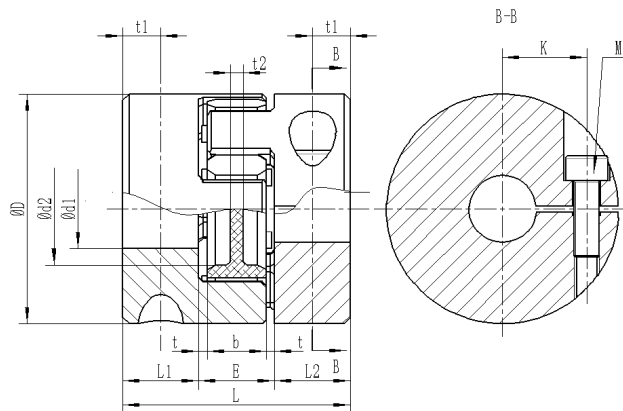
产品特点

- 无齿隙连接，用于小扭矩的测量传动，升降平台和机床传动等
- 尺寸小，转动惯量小
- 开槽后利用螺钉抱紧，可消除轴孔间隙
- 可吸收振动，补偿轴向、径向、轴向偏差
- 不同硬度的弹性体可供选择
- 成品孔径公差按照ISO标准H7，键槽公差按照DIN6885/1标准JS9



Characteristics:

Backlash-free connection, small torque for measuring equipment
 Small size and small rotation inertia;
 Free maintenance and easy for visual check;
 Elastomer with different hardness for option;
 Finished bore tolerance respects ISO H7, excluding clamping shaft sleeve, DIN6885/1 for bore diameter above, JS9 for keyway.



RGE-GS-DK型, 9~28规格轴套材质刚强度铝合金 RGE-GS-DK type, Size 9~28 in high-strength aluminum Alloy																
型号 Model RGE -GS-DK	扭矩 Torque (Nm)			外形尺寸 Dimensions(mm)											螺钉 Screws	锁紧力矩 Locking torque Nm
	92sh-A	98sh-A	64sh-D	D	d1 (min-max)	d2	L	L1;L2	E	k	b	t	t1	t2	Ms	T _A
9	3	5	6	20	4-11	7.2	30	10	10	7.5	8	1	5	1.5	M2.5	0.76
12	5	9	12	25	5-12	8.5	34	11	12	9	10	1	5	3.5	M3	1.34
14	8	13	16	30	5-16	10.5	35	11	13	11.5	10	1.5	5	2	M3	1.34
19	10	17	21	41	8-24	18	50	17	16	14	12	2	6	3	M6	10.5
24	35	60	75	56	10-28	27	54	18	18	20	14	2	7	3	M6	10.5
28	95	160	200	66	14-38	30	62	21	20	23.8	15	2.5	9	4	M8	25

选型举例: Example: RGE-GS28-24B-24B-98-YJ-DK

RGE-GS28	24	A/B	24	A/B	98	YJ	DK
产品规格 Product specifications	孔径 Bore diameter	轴套形式 Shaft sleeve type	孔径 Hole diameter	轴套形式 Shaft sleeve type	弹性体硬度 Elastomer hardness	阳极氧化 Anodic oxidation	结构形式 Structural style