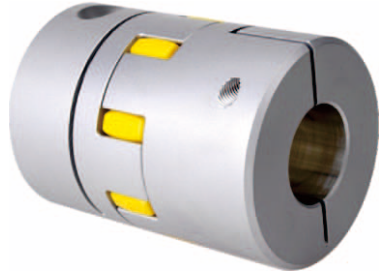


RGE-GS 开槽型 (KC)

RGE-GS Slotting Type (KC)

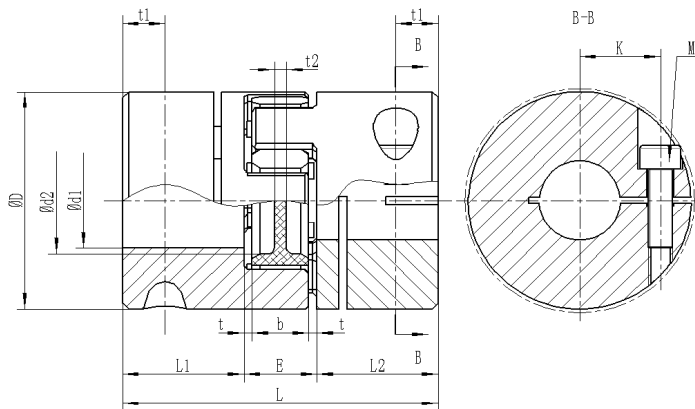
产品特点

- 无齿隙连接，用于小扭矩的测量传动，升降平台和机床传动等
- 尺寸小，转动惯量小
- 开槽后利用螺钉抱紧，可消除轴孔间隙
- 可吸收振动，补偿轴向、径向、轴向偏差
- 不同硬度的弹性体可供选择
- 成品孔径公差按照ISO标准H7，键槽公差按照DIN6885/1标准JS9



Characteristics:

Backlash-free connection, small torque for measuring equipment, lifting platform and machining tools, etc..
 Small size and small rotation inertia;
 Clamped by screws after grooving, which can avoid the gap between shaft bores;
 Absorb vibration and compensate radial and axial deviation.
 Elastomer with different hardness for option;
 Finished bore tolerance respects ISO H7, DIN6885/1 and JS9 for keyway.



RGE-GS-KC型, 19~38规格轴套材质高强度铝合金, 42~90规格轴套材质钢 RGE-GS-KC type, Size 19~38 in high-strength aluminum Alloy, Size 42~90 in Steel																
型号 Model RGE -GS-KC	扭矩 Torque (Nm)			外形尺寸 Dimensions(mm)											螺钉 Screws	锁紧力矩 Locking torque Nm
	92sh-A	98sh-A	64sh-D	D	d1 (min-max)	d2	L	L1:L2	E	k	b	t	t1	t2	M _s	T _A
19	10	17	21	41	8-22	18	66	25	16	14.5	12	2	11	3	M6	10.5
24	35	60	75	56	10-28	27	78	30	18	20	14	2	10.5	3	M6	10.5
28	95	160	200	66	14-38	30	90	35	20	25	15	2.5	11.5	4	M8	25
38	190	325	405	80	15-45	38	114	45	24	30	18	3	15.5	4	M8	25
42	265	450	560	95	20-50	46	126	50	26	32	20	3	18	4	M10	69
48	310	525	655	105	25-55	51	140	56	28	36	21	3.5	21	4	M12	120
55	410	685	825	120	32-65	60	160	65	30	42.5	22	4	26	4.5	M12	120
65	-	940	1175	135	35-70	68	185	75	35	45	26	4.5	33	4.5	M12	120
75	-	1920	2400	160	42-80	80	210	85	40	51	30	5	36	5	M16	295
90	-	3600	4500	200	42-90	104	245	100	45	60	34	5.5	40	6.5	M20	580

选型举例: Example: RGE-GS38-24B-24B-98-YJ-KC

RGE-GS38	24	A/B	24	A/B	98	YJ	KC
产品规格 Product specifications	孔径 Bore diameter	轴套形式 Shaft sleeve type	孔径 Hole diameter	轴套形式 Shaft sleeve type	弹性体硬度 Elastomer hardness	阳极氧化 Anodic oxidation	结构形式 Structural style