**说明:**Mt 额定传递扭矩(当轴向负荷 $F_t = 0$ 时;)Ft 额定轴向载荷(当扭向负载 $M_t = 0$ 时)

TS 锁紧螺栓拧紧力矩

InstructionsMt means rated transmitted torque (while the axial loading F_t is 0)Ft means rated axial loading (while the torsional loading M_t is 0)

TS means tightening torque of locking bolts

技术说明**· 扭矩“Mt”**

传递扭矩取决于轴和毂之间的摩擦系数、间隙以及轴直径这些因素。

· 摩擦系数

上表中所有扭矩值是按主轴与毂摩擦系数为0.15计算结果(干燥、并且无油脂表面“钢/钢”之间的摩擦系数为0.15~0.33)。实际使用场合与此条件不符,则传递扭矩会发生相应改变,如:实际使用中主轴与毂接触表面存在一般润滑油,摩擦系数为0.12,则扭矩值会相应降低。

· 间隙

上表是在间隙“d”160MM以内主轴与毂孔按H7/h6配合,大于或等于160主轴与毂孔按H7/g6配合,并按间隙最大值的情况下,计算出扭矩。如果轴和毂之间的实际间隙比较紧,会增大传递扭矩。反之亦然(即实际间隙比较松,则减小传递扭矩)。

· 轴直径“dw”

同一规格锁紧盘对应的主轴“dw”直径可能不同,详见上表。如果实际所用主轴直径位于图表中的两个规格(锁紧盘)之间,则传递扭矩在两轴径“dw”对应的额定扭矩“Mt”之间。

· 毂材料

毂材料可以选用钢、或者球墨铸铁,材料的屈服强度至少在安全使用范围内。装配产品如果必须传递弯矩(旋转弯曲),扭矩和毂应为诸如42CrMo4的热处理钢,或者质量优良的铸钢或者球墨铸铁。如果出现弯矩可忽略不计,则可以使用灰铸铁。

· 表面质量

轴和毂的表面粗糙度(Ra)应该低于 $3.2\mu\text{m}$ 。

为确保REACH47锁紧盘正常使用,请向瑞迪机械实业有限公司申请《REACH47锁紧盘安装、拆卸使用说明书》。

Technical Specifications
Torque Mt

The transmitted torque depends on the friction factor between the shaft and hub, clearance and shaft diameter.

Friction Factor

All the torques in the Table are calculated when the friction factor between the shaft and hub is 0.15 (the friction factor between the dry steels without oil is 0.15~0.33). Otherwise, the transmitted torque will be changed. If the friction factor is 0.12 between the shaft and hub with lubricant, the torque will be reduced correspondingly.

Clearance

For the torque in the Table, the clearance d upto 160mm is used while the shaft matches hub according to H7/h6, or the clearance d from 160mm or equal to 160mm is used while the shaft matches hub according to H7/g6, as well as the max. clearance. The transmitted torque will be increased if the clearance is smaller and vice versa (which means the larger clearance will reduce the transmitted torque)

Shaft Diameter dw

The diameter dw of the shaft of the same-size shrink discs might be different. For more details, please refer to the above Table. For the actual shaft diameter included by the two shrink discs sizes in the Table, the transmitted torque will be between the rated torque corresponding to the dw of the shafts.

Materials of Hub

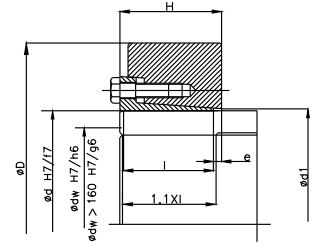
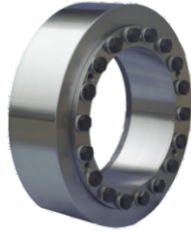
The hub can be made of steel or ductile iron. The yielding strength of the materials shall satisfy the safety application requirements. If it is necessary to transmit bending moment (rotation bending), the torque and hub shall be made of heat-treat steel 42CrMo4, good-quality cast steel or ductile iron. The gray cast iron can be used if the bending moment can be neglected.

Surface Quality

The surface roughness (Ra) of the shaft and hub shall be smaller than $3.2\mu\text{m}$.

Please contact us for Mounting and Dismounting Instructions for REACH 47 Shrink Discs.

REACH 47锁紧盘
REACH47 Shrink Discs



类似JB/T 7934 Z10标准
Similar to JB/T 7934 Z10 Standard

尺寸 Dimensions							锁紧螺栓 ISO 4014 Locking Bolts ISO 4014		额定负荷 Rated Loading	
d	dw	D	l	H	d1	e	Ms	Ts	Mt	Ft
[mm]	[mm]	[mm]	[mm]	[mm]	[mm]	[mm]	mm	Nm	[Knm]	[kN]
24	19	50	14	18	26	2	M5	5	0.16	17
	20								0.2	20
	22								0.28	25
30	24	60	16	20	32	2	M5	5	0.28	23
	25								0.32	25
	26								0.36	27
36	27	72	18	22	39	2	M8	29	0.44	32
	30								0.60	41
	33								0.81	50
44	34	80	20	24	47	2	M8	29	0.68	41
	35								0.76	44
	37								0.91	50
50	38	90	22	26	53	2,5	M8	29	1.10	57
	40								1.28	64
	42								1.49	70
55	42	100	23	29	58	3	M8	29	1.22	58
	45								1.51	67
	48								1.84	77
62	48	110	23	29	66	3	M8	29	1.65	69
	50								1.87	75
	52								2.10	80
68	50	115	23	29	72	3	M8	29	1.85	74
	55								2.43	88
	60								3.09	103
75	55	138	25	31	79	4	M10	58	2.31	84
	60								2.99	100
	65								3.77	116
80	60	141	25	31	84	4	M10	58	3.16	105
	65								4.02	122
	70								4.86	139
90	65	155	30	38	94	4	M10	58	5.35	164
	70								6.44	185
	75								7.72	206
100	70	170	34	43	104	4	M10	58	5.94	169
	75								7.13	190
	80								8.42	211
110	80	185	39	49	114	5,5	M12	100	9.90	247
	85								11.6	272
	90								13.5	299
120	85	197	42	53	124	6,5	M12	100	11.8	277
	90								13.7	304
	95								15.7	331
125	90	215	42	53	129	6,5	M12	100	14.3	316
	95								16.3	344
	100								18.5	371
135	95	230	46	58	139	8,5	M14	160	17.9	378
	100								20.4	408
	110								25.7	468
140	100	230	46	58	144	8,5	M14	160	19.4	388
	105								21.9	417
	115								27.3	476
155	110	263	50	62	159	8,5	M14	160	26.2	477
	115								29.2	509
	125								35.7	572
165	120	290	56	68	169	9,5	M16	240	36.9	616
	125								40.8	652
	135								49.1	727
175	130	300	56	68	179	10	M16	240	44.6	685
	135								48.5	723
	145								57.4	797
185	140	320	71	85	191	10	M16	240	63.4	907
	145								69.3	951
	155								81.2	1042
200	150	340	71	85	206	11	M16	240	80.2	1062
	155								86.1	1109
	165								99.0	1204

REACH 47锁紧盘

REACH47 Shrink Discs

类似JB/T 7934 Z10标准

Similar to JB/T 7934 Z10 Standard

尺寸 Dimensions							锁紧螺栓 ISO 4014 Locking Bolts ISO 4014		额定负荷 Rated Loading	
d	dw	D	l	H	d1	e	Ms	Ts	Mt	Ft
[mm]	[mm]	[mm]	[mm]	[mm]	[mm]	[mm]	mm	Nm	[Knm]	[kN]
220	160	370	88	103	228	12	M20	470	102	1270
	170								118	1381
	180								135	1494
240	170	405	92	107	248	13	M20	470	121	1425
	180								139	1539
	200								177	1772
260	190	430	103	119	268	14	M20	470	161	1698
	200								182	1824
	220								229	2078
280	210	460	114	132	288	16	M20	470	213	2030
	220								238	2164
	240								292	2433
300	220	485	122	140	308	16	M24	820	267	2431
	230								297	2579
	250								359	2877
320	240	520	122	140	328	16	M24	820	298	2486
	250								329	2628
	270								394	2916
340	250	570	134	155	348	18	M24	820	386	3087
	260								423	3250
	280								501	3581
350	270	580	140	162	358	20	M24	820	488	3613
	280								530	3787
	290								574	3961
360	270	590	140	162	368	20	M24	820	491	3639
	280								534	3813
	300								625	4164
380	290	640	144	166	388	20	M27	1210	579	3994
	300								626	4173
	310								674	4353
390	290	650	144	166	398	20	M27	1210	634	4367
	300								684	4559
	320								791	4946
420	320	670	163	186	428	22	M27	1210	735	4594
	330								789	4781
	350								903	5157
440	340	740	172	194	448	22	M27	1210	936	5501
	350								999	5706
	370								1132	6119
460	360	770	172	194	468	22	M27	1210	1093	6072
	370								1162	6282
	390								1307	6703
480	380	800	188	213	488	22	M30	1640	1287	6775
	390								1364	6995
	410								1526	7441
500	400	850	188	213	508	22	M30	1640	1481	7403
	410								1565	7634
	430								1741	8098
530	430	910	213	238	538	22	M30	1640	1911	8886
	440								2011	9142
	460								2221	9654
560	450	940	213	238	568	22	M30	1640	2076	9225
	460								2179	9476
	480								2396	9980
590	470	960	228	260	598	25	M30	1640	2567	10922
	480								2688	11201
	500								2940	11762
620	500	1020	254	286	630	25	M30	1640	2875	11500
	520								3137	12068
	540								3413	12639
660	530	1070	260	292	670	25	M33	2210	3296	12436
	550								3578	13009
	570								3872	13585
700	560	1140	260	292	710	25	M33	2210	3766	13449
	580								4068	14027
	600								4383	14608
750	600	1150	278	320	760	38	M33	2210	4753	15844
	620								5105	16470
	650								5659	17413
800	640	1230	296	350	810	40	M33	2210	5749	17966
	660								6149	18635
	700								6992	19979